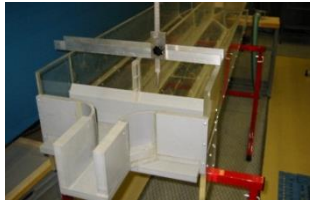


Sediment Sluicing System HSR

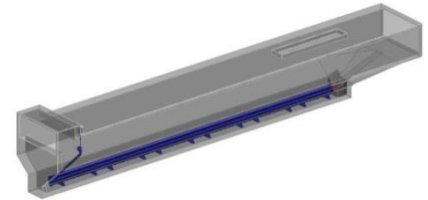
Cost-effective and high efficient, reliable components for your desander plant

System patented Nr. 696 137

- 2002**
- Development and model tests in our own laboratory
 - Patented
 - Order Burglauenen, Jungfraubahnen AG



Model tests



Overall view (blue: system HSR)

- 2003**
- Order Tantermozza, Engadiner Kraftwerke AG (Modular rehabilitation sets for existing desander plants)



Section of system HSR



Overall view of system HSR

- 2004**
- Realisation Burglauenen
 - Tantermozza operational

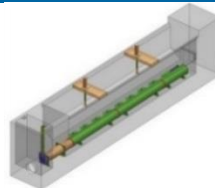


Desander plant Burglauenen

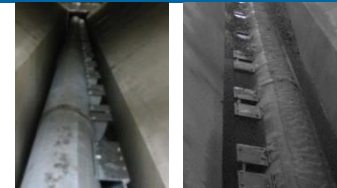


Completely evacuated flushing channel

- 2005**
- Burglauenen operational
 - Order Gösat, Kraftwerke Dala AG



Desander plant Gösat with sediment detection and flushing valve



Sludging tubes ready for operation (left) and after a half year of operation after dewatering (right)

2006	■ Orders	<ul style="list-style-type: none"> + WF Titer (GKW) + KW Bard (C.V.A.) <i>Desander for gravel</i> 	<ul style="list-style-type: none"> + Kühlwasserbecken Nestil (KLL)
2007	■ Orders	<ul style="list-style-type: none"> + KW Ponte Brolla (AET) + Umbau WF Saas Fee (KWM) 	<ul style="list-style-type: none"> + WF Riedbach (KWM) + WF Rotlauri (KWO)
2008	■ Orders	<ul style="list-style-type: none"> + WF Mühlebach (SN Energie) 	<ul style="list-style-type: none"> + WF Val Strem (Deplazes)
2009	■ Orders	<ul style="list-style-type: none"> + Rhonefassung (Lonza) + WF Engi (SN Energie) 	<ul style="list-style-type: none"> + Umbau WF Saas-Balen (EnAlpin)
2010	■ Orders	<ul style="list-style-type: none"> + Umbau WF Mörel (Hydro Expl.) <i>VP</i> 	
2011	■ Orders	<ul style="list-style-type: none"> + KW Buholzbach (EW NW) + KW Wysswasser 	<ul style="list-style-type: none"> + WF Segnas (EW Flims) + WF Tambobach (Entegra)
2012	■ Orders	<ul style="list-style-type: none"> - WF Stanzertal (ILF) + WF Gösat II (KW Dala AG) + KW Walibach (EnBAG) 	<ul style="list-style-type: none"> + WF Jungbach (EnAlpin) + KWK Lavin (OELL)
2013	■ Orders	<ul style="list-style-type: none"> + KW Erbach (BKW) + WF Steigs (Rüesch Engineering) + KWK Tasnan (COET) 	<ul style="list-style-type: none"> - WF Tumpen-Habichen (Öztaler WK GmbH) + KW Wysswasser <i>Desander for gravel</i> + KW Ulrichen (KW Obergoms AG)
2014	■ Orders	<ul style="list-style-type: none"> + KW Doppelpower (SN Energie) 	
2015	■ Orders	<ul style="list-style-type: none"> + WF Fämelbach (BKW) + WF Pfengli (KWO) + KW Bristen (IUB) 	<ul style="list-style-type: none"> + WF Gletsch (FMV) + KW Realp II (EW Ursern) + KWKW Niderbach (KW Obergoms AG)
2016	■ Orders	<ul style="list-style-type: none"> + KW Rüchlig (Axpö) + Entsander AR (Gruner) 	<ul style="list-style-type: none"> + WF Clemgia (Energia Engiadina) + WF Nidristi (EnBAG)
2017	■ Orders	<ul style="list-style-type: none"> + WF Molino (Edy Toscano) + WF Aostatatal (Eaux Valdotaines) 	<ul style="list-style-type: none"> + WF Merlen (EW Murg) + KW Berschnerbach (Gruner Wepf)
2018	■ Orders	<ul style="list-style-type: none"> + WF Wiler-Kippel (BKW) + KW Gere (KW Obergoms AG) + KW Breithorn-Fafleralp 	<ul style="list-style-type: none"> + KW Sousbach (BKW) + KW Erstfeldertal (IUB)